



MARTINEZ PICNIC SITES

Hidden Valley Park

(16 Acres) Center Avenue & Redwood Drive. Two lighted tennis courts, four reservable picnic areas, two first-come-first serve picnic areas, playground area, two ball fields, restrooms, bicycle/jogging paths, 1-mile exercise course and a 2-mile pathway leading up to Hidden Lakes Park.



BEECH

West side of the restroom, partly covered

Capacity: 40 People; (1) BBQ, (5) Tables

Deposit: \$150

Martinez Resident: \$85

Non-Resident: \$150



OAK

Next to playground, covered

Capacity: 75 People; (1) BBQ, (9) Tables

Deposit: \$150

Martinez Resident: \$180

Non-resident: \$300



POPLAR

East of Sycamore area, not covered Capacity:

100 People; (2) BBQ, (12) Tables

Deposit: \$150

Martinez Resident: \$180

Non-resident: \$300



SYCAMORE

Closer to playground, not covered Capacity:

100 People; (2) BBQ, (12) Tables

Deposit: \$150

Martinez Resident: \$180

Non-resident: \$300



Holiday Highlands Park

(2 Acres) Fig Tree Lane & Eastwoodbury Lane. Two reservable picnic areas, two first-come-first-serve picnic areas, playground area, multi-use field, bike racks and lighted pathways. All picnic areas are ADA accessible.



NORTH

Next to the playground, not covered
Capacity: 16 People; (0) BBQ, (2) Tables
Deposit: \$150
Martinez Resident: \$60
Non-resident: \$110



CREEKSIDE

West side of restroom along creek, not covered
Capacity: 16 People; (1) BBQ, (2) Tables
Deposit: \$150
Martinez Resident: \$60
Non-resident: \$110



Nancy Boyd Park

(8.5 Acres) Pleasant Hill Road East & Church Street. Baseball field, basketball court, a playground area, three lighted tennis courts, small meeting room, three reservable picnic areas, one first-come-first-serve picnic area and restrooms. All picnic areas are ADA accessible.



EAST

Between restroom and basketball court, covered

Capacity: 30 People; (1) BBQ, (4) Tables

Deposit: \$150

Martinez Resident: \$60

Non-resident: \$110



WEST

Next to playground, covered

Capacity: 15 People; (1) BBQ, (2) Tables

Deposit: \$150

Martinez Resident: \$60

Non-resident: \$110



PAVILION

Near parking lot, covered

Capacity: 30 People; (2) BBQ, (4) Tables

Deposit: \$150 deposit

Martinez Resident: \$85

Non-resident: \$150



Nancy Boyd Room

Multi-purpose room with 20-person maximum capacity.

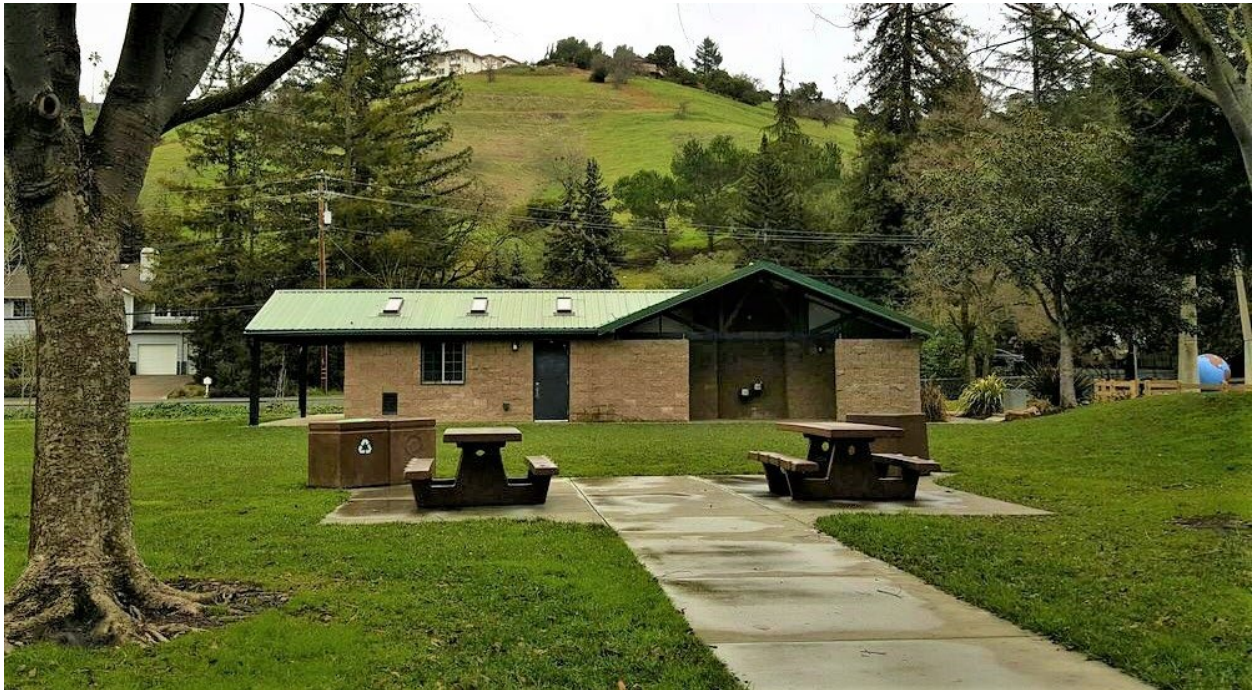
Amenities: Electricity, refrigerator, sink and microwave. About 15 child size chairs and tables.

3 Hour Minimum; 9 hour maximum charged

Deposit: \$150

Martinez Resident: \$65/hr

Non-Resident/Non-Profit: \$87/hr



Rankin Park

(41 Acres) West end of Buckley Street. Rankin Aquatic Center, two picnic areas, lighted softball field, restroom, playground area and gazebo. All amenities are ADA accessible.



OLIVE GROVE

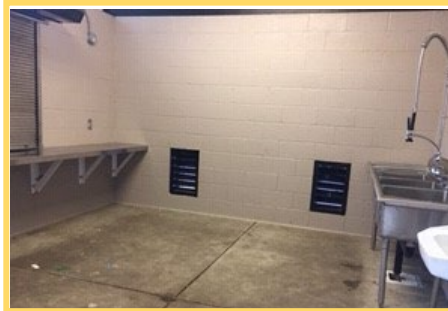
Southern part, not covered. Lower half is ADA accessible, upper half is not.

Capacity: 160 People; (2) BBQ. Lower Half - (8) Tables; Upper Half - (12) Tables

Deposit: \$150

Martinez Resident: 270

Non-resident: \$360



The Olive Grove Area includes a concession building with electricity & a sink.



CANYON

Closest to playground, not covered Capacity: 110 People; (3) BBQ, (14) Tables

Deposit: \$150

Martinez Resident: \$180

Non-resident: \$300



GAZEBO

Near parking lot

Capacity: 120 People

Deposit: \$150

Martinez Resident: \$270

Non-resident: \$360



Waterfront Park

(150 Acres) North Court Street via Ferry Street. Four ballfield complexes with concession stand and restrooms, three reservable picnic areas, playground, bocce ball courts, and two restroom structures. Located south of the Marina, fishing pier, amphitheater, and skate park. All picnic areas are ADA accessible.



EAST

North of bocce courts and restroom, on gravel

Capacity: 120 People

Amenities: Electricity and sink, (4) BBQ, (12) Tables

Deposit: \$150

Martinez Resident: \$180

Non-resident: \$300



WEST

North of bocce courts and restrooms, on concrete

Capacity: 180 People

Amenities: Electricity and sink, (4) BBQ, (18) Tables

Deposit: \$150

Martinez Resident: \$270

Non-resident: \$360



PAVILION

Next to playground and restroom, covered

Capacity: 60 People; (1) BBQ, (6) Tables

Deposit: \$150

Martinez Resident: \$85

Non-resident: \$150



Golden Hills Park

(7 Acres) End of Bernice Lane off Blue Ridge Drive. Two lighted tennis courts, multi-use facility, restroom, playground area, basketball court and picnic area. Wonderful views and serenity of the surrounding open space.



GOLDEN HILLS PICNIC

Next to Swing Set

Capacity: 25 people

Amenities: (1) BBQ, (4) Tables

Deposit: \$150

Martinez Resident: \$60

Non-Resident: \$110



Golden Hills Room

Multi-purpose room with 25-person maximum capacity. Amenities include electricity, refrigerator, sink, tables and chairs.

Rented at a 3 - hour minimum and 9 - hour maximum

GOLDEN HILLS ROOM

Next to basketball court

Capacity: 25 people

Amenities: Electricity, refrigerator, sink, tables and chairs.

Deposit: \$150

Martinez Resident: \$65/hr

Non-Resident: \$87/hr

