



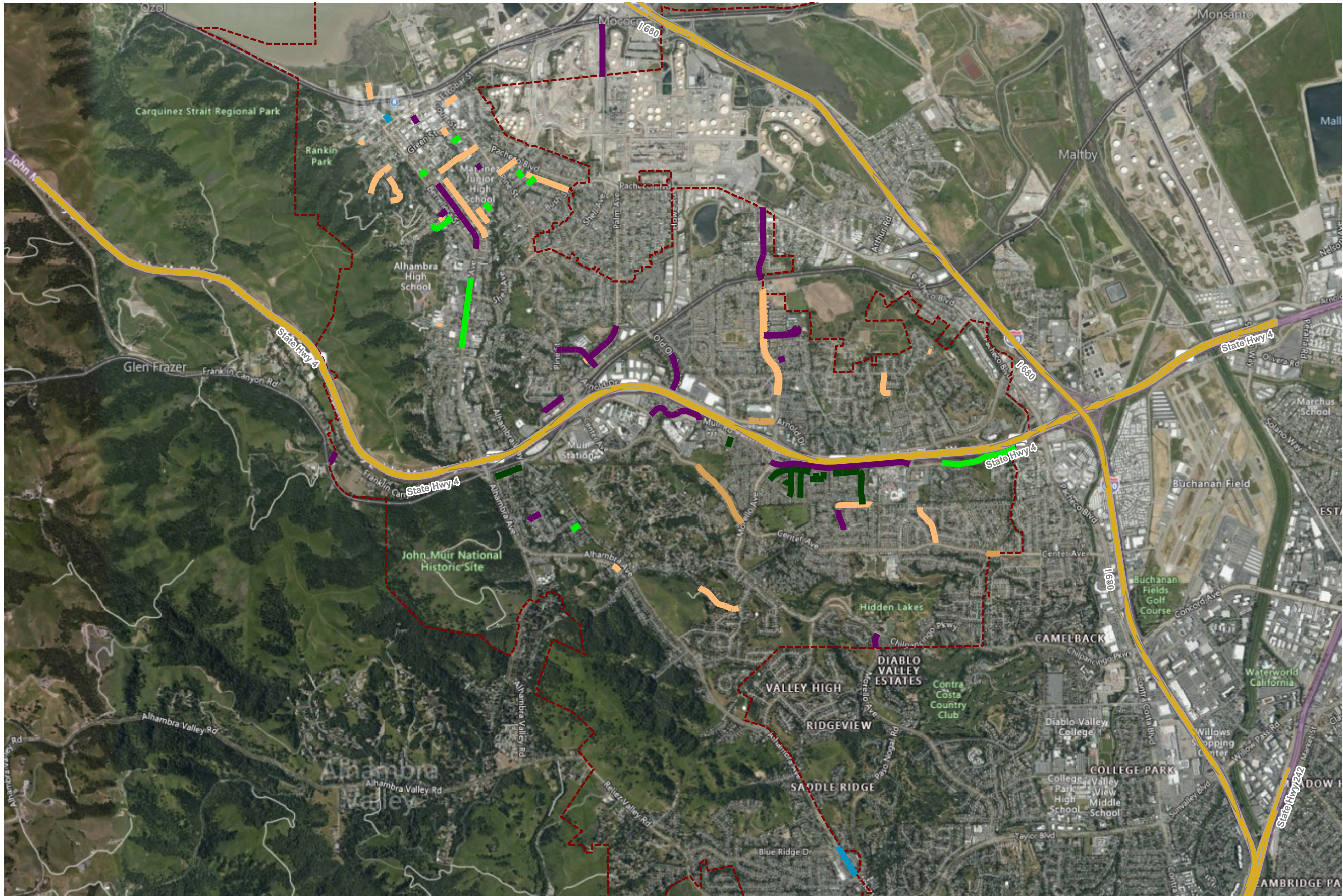
CITY OF MARTINEZ

Scenario Treatments

Fiscal Year 2020/2021 Pavement Preservation Project

Feature Legend

- BASE REPAIR & MICROSURFACING
- BASE REPAIR & RUBBERIZED CAPE SEAL
- RHMA OVERLAY (2")
- RHMA OVERLAY (2.5")
- SEAL CRACKS
- SLURRY SEAL



Year: 2020

Street Name	Begin Location	End Location	Street ID	Section ID	Length	Width	Area	Unit Cost	Cost	Treatment
ALHAMBRA AVE (NB)	ESCOBAR	MARINA VISTA	ALHAMB	5750C	250	37	9,250	\$4.50	\$41,625	RHMA OVERLAY (2")
KELLY AVE	YALE ST	MONTEREY AVE	KELLY	01	1,025	27	27,675	\$4.50	\$124,538	RHMA OVERLAY (2")
Sub-Total:									\$166,163	
BERTOLA ST	ALHAMBRA	END	BERTOL	2480	390	30	11,700	\$5.33	\$62,361	FDR
BUNDROS CT	SHELL	END	BUNDRO	2390	200	36	7,200	\$5.33	\$38,376	FDR
DINEEN ST	MILLER	WEST END	DINEEN	2960	265	19	5,035	\$5.33	\$26,837	FDR
MILLER AVE	DINEEN	MARINA VISTA	MILLER	2980	500	25	12,500	\$5.33	\$66,625	FDR
WARREN ST	225 FT W OF PROSPECT		WARREN	3170	360	17	6,120	\$5.33	\$32,620	FDR
WARREN ST	PROSPECT	225 FT W OF PROSPECT	WARREN	375	225	22	4,950	\$5.33	\$26,384	FDR
Sub-Total:									\$253,202	
ALHAMBRA AVE	MARINA VISTA	BUCKLEY	ALHAMB	5755	220	37	8,140	\$2.65	\$21,571	RUBBER CAPE SEAL
ESCOBAR ST	BERRELLESA	CASTRO	ESCOBA	2685	475	33	15,675	\$2.65	\$41,539	RUBBER CAPE SEAL
MORELLO AVE	ARNOLD	MUIR	MORELL	5840	1,100	46	50,600	\$2.65	\$134,090	RUBBER CAPE SEAL
ANDREWS DR	PINE	END	ANDREW	3490	162	27	4,374	\$2.65	\$11,591	RUBBER CAPE SEAL
ANDREWS DR	PINE	NICOLETTE	ANDREW	3492	560	27	15,120	\$2.65	\$40,068	RUBBER CAPE SEAL
ARREBA ST	BERRELLESA	RICHARDSON	ARREBA	400	225	30	6,750	\$2.65	\$17,888	RUBBER CAPE SEAL
AUGUSTINE DR	JAYS PL	MACALVEY DR	AUGUST	02	980	33	32,340	\$2.65	\$85,701	RUBBER CAPE SEAL
AUGUSTINE DR	JAYS PL	SOUTH END	AUGUST	03	1,147	33	40,146	\$2.65	\$106,387	RUBBER CAPE SEAL
BENEDICT CT	MARTINDALE	END	BENEDI	5110	468	33	17,439	\$2.65	\$46,213	RUBBER CAPE SEAL
BRECKENRIDGE PL	HEAVENLY	END	BRECKE	01	415	29	12,035	\$2.65	\$31,893	RUBBER CAPE SEAL
CASTRO ST	A	BERTOLA	CASTRO	2797	350	30	10,500	\$2.65	\$27,825	RUBBER CAPE SEAL
CENTER AVE (EB)	400 FT E/O HIDDEN LAKES		CENTER	6045	650	31	20,150	\$2.65	\$53,398	RUBBER CAPE SEAL
CENTER AVE (WB)	CITY LIMITS	HIDDEN LAKES	CENTER	6050	1,050	31	32,550	\$2.65	\$86,258	RUBBER CAPE SEAL
CENTER AVE (WB)	1000 FT S/O MUIR RD		CENTER	6070	1,000	28	28,000	\$2.65	\$74,200	RUBBER CAPE SEAL
COURT ST	MELLUS	105 FT S/O THOMPSON	COURT	2900	125	25	3,125	\$2.65	\$8,281	RUBBER CAPE SEAL
COURT ST	ESCOBAR	MARINA VISTA	COURT	2908	200	34	6,800	\$2.65	\$18,020	RUBBER CAPE SEAL
DINEEN ST	MILLER	EAST END	DINEEN	2970	235	19	4,465	\$2.65	\$11,832	RUBBER CAPE SEAL
DOUGLAS DR (EB)	320 FT W/O PINE ST		DOUGLA	3905	320	17	5,440	\$2.65	\$14,416	RUBBER CAPE SEAL
DOUGLAS DR	1475 FT W/O PINE	END	DOUGLA	3930	147	26	3,822	\$2.65	\$10,128	RUBBER CAPE SEAL
DUNCAN DR	ARREBA	END	DUNCAN	430	560	22	12,320	\$2.65	\$32,648	RUBBER CAPE SEAL
DUTRA RD	FRANKLIN CANYON		DUTRA	789	342	15	5,130	\$2.65	\$13,595	RUBBER CAPE SEAL
ESTUDILLO ST	ESCOBAR	MAIN	ESTUDI	2777	225	34	7,650	\$2.65	\$20,273	RUBBER CAPE SEAL
F ST	150' W/O GENEVA	END	F	580	545	37	20,165	\$2.65	\$53,437	RUBBER CAPE SEAL
FERRY ST	WARD	GREEN	FERRY	2816	220	33	7,260	\$2.65	\$19,239	RUBBER CAPE SEAL
GREEN ST	75 FT E/O W. GREEN		GREEN	230	320	20	6,400	\$2.65	\$16,960	RUBBER CAPE SEAL
GREGORY AVE	Pine St	Boynton Ave	GREGOR	3292	460	27	12,420	\$2.65	\$32,913	RUBBER CAPE SEAL
HAAG RD	BRACKMAN	END	HAAG	1985	200	20	4,000	\$2.65	\$10,600	RUBBER CAPE SEAL
HENRIETTA ST	Castro St	Estudillo St	HENRIE	2630	225	30	6,750	\$2.65	\$17,888	RUBBER CAPE SEAL
JONES ST	COURT	PINE	JONES	2865	200	27	5,400	\$2.65	\$14,310	RUBBER CAPE SEAL
LAKEWOOD PL	CHILPANCINGO	END	LAKEWO	4525	95	15	1,425	\$2.65	\$3,776	RUBBER CAPE SEAL
LAUREL CT	415 FT S/O PLEASANT HILL RD		LAUREL	2005	231	23	6,621	\$2.65	\$17,546	RUBBER CAPE SEAL
LODGEPOLE CT	HOLLY VIEW	END	LODGE	3572	193	25	7,653	\$2.65	\$20,280	RUBBER CAPE SEAL
MACKIE DR	CHURCH ST	END	MACKIE	01	358	22	7,876	\$2.65	\$20,871	RUBBER CAPE SEAL
MARTINDALE DR	400' W/O BENEDICT		MARTIN	5090	700	35	24,500	\$2.65	\$64,925	RUBBER CAPE SEAL
MEDFORD CT	FORSYTHIA	END	MEDFOR	01	660	29	19,140	\$2.65	\$50,721	RUBBER CAPE SEAL
MELLUS ST	CASTRO	ESTUDILLO	MELLUS	2635	200	27	5,400	\$2.65	\$14,310	RUBBER CAPE SEAL

Year: 2020

Street Name	Begin Location	End Location	Street ID	Section	Length	Width	Area	Unit Cost	Cost	Treatment
MILANO WAY	ARNOLD	ROSEMARY	MILANO	4140	490	32	15,680	\$2.65	\$41,552	RUBBER CAPE SEAL
MORELLO HEIGHTS DR	MORELLO AVE	460 FT W/O MORELLO AVE	MORELL	01	460	25	11,500	\$2.65	\$30,475	RUBBER CAPE SEAL
MORELLO AVE	200' N/O MARIE	600' S/O MARIE	MORELL	4000	800	60	48,000	\$2.65	\$127,200	RUBBER CAPE SEAL
MORELLO PARK DR	MORELLO AVE	END	MORELP	02	620	12	7,440	\$2.65	\$19,716	RUBBER CAPE SEAL
MUIR RD	CENTER AVE	ARANA DR	MUIR	4220	1,970	52	102,440	\$2.65	\$271,466	RUBBER CAPE SEAL
MUIR RD	Morello Av E/S	Glacier Dr W/S	MUIR	4240	3,850	37	142,450	\$2.65	\$377,493	RUBBER CAPE SEAL
MUIR RD	ARANA DR	VETERANS RD	MUIR	4260	330	39	12,870	\$2.65	\$34,106	RUBBER CAPE SEAL
MUIR STATION RD	ALHAMBRA WAY	1100' W/O CENTER	MUIRST	4210	1,200	23	27,600	\$2.65	\$73,140	RUBBER CAPE SEAL
PALM AVE	625' N/O VISTA	1400' S/O MONTEREY	PALM	3714	550	26	14,300	\$2.65	\$37,895	RUBBER CAPE SEAL
PHYLIS TERRACE	ALHAMBRA	END	PHYLIS	1940	505	35	18,402	\$2.65	\$48,765	RUBBER CAPE SEAL
PINE ST	BUSH	GREGORY	PINE	3864	805	27	21,735	\$2.65	\$57,598	RUBBER CAPE SEAL
PINE ST	GREGORY AVE	JONES ST	PINE	3880	1,580	27	42,660	\$2.65	\$113,049	RUBBER CAPE SEAL
PINE PARK CT	HOLLY VIEW	END	PINEPA	3574	269	25	9,553	\$2.65	\$25,315	RUBBER CAPE SEAL
PROSPECT AVE	WARREN	END	PROSPE	380	190	20	3,800	\$2.65	\$10,070	RUBBER CAPE SEAL
RAAP AVE	H ST	K ST	RAAP	773	552	26	14,352	\$2.65	\$38,033	RUBBER CAPE SEAL
RICHARDSON ST	ROBINSON	BROWN	RICHAR	442	261	25	6,525	\$2.65	\$17,291	RUBBER CAPE SEAL
SONORA CT	TAHOE	END	SONORA	2060	408	34	13,872	\$2.65	\$36,761	RUBBER CAPE SEAL
SUNRISE DR	ARNOLD	PACHECO	SUNRIS	01	2,060	41	84,460	\$2.65	\$223,819	RUBBER CAPE SEAL
TRUITT AVE	ALHAMBRA AVE	CHURCH ST	TRUITT	01	265	22	5,830	\$2.65	\$15,450	RUBBER CAPE SEAL
ULFINIAN WAY	Pine St	La Salle St	ULFINI	3310	624	27	16,848	\$2.65	\$44,647	RUBBER CAPE SEAL
VINE HILL WAY	Chase	Costanza Dr	VINEHI	5365	1,383	24	33,192	\$2.65	\$87,959	RUBBER CAPE SEAL
VISTA WAY	PINE	HOWE	VISTA	3840	1,325	26	34,450	\$2.65	\$91,293	RUBBER CAPE SEAL
VISTA OAKS	DOUGLAS	END	VISTAO	3905	962	25	24,050	\$2.65	\$63,733	RUBBER CAPE SEAL
WESTVIEW CT	PINE	END	WESTVI	3580	537	25	13,425	\$2.65	\$35,576	RUBBER CAPE SEAL
Sub-Total:									\$3,187,990	
BERRELLESA ST	180 FT N OF EMBARCADERO		BERREL	50	280	25	7,000	\$0.95	\$6,650	MICROSURFACING
CASTRO ST	BROWN	A	CASTRO	2795	800	30	24,000	\$0.95	\$22,800	MICROSURFACING
LA SALLE ST	ULFINIAN	BUSH	LASALL	3330	1,275	27	34,425	\$0.95	\$32,704	MICROSURFACING
MARTI MARIE CT	MARTI MARIE	END	MARTIM	10	394	33	15,030	\$0.95	\$14,279	MICROSURFACING
MELLUS ST	ESTUDILLO	FERRY	MELLUS	2637	220	27	5,940	\$0.95	\$5,643	MICROSURFACING
MORELLO AVE	600' S/O MARIE	MIDHILL	MORELL	4005	1,400	16	22,400	\$0.95	\$21,280	MICROSURFACING
MORELLO AVE	MIDHILL	ARNOLD	MORELL	4430	2,050	61	125,050	\$0.95	\$118,798	MICROSURFACING
PALM AVE	VISTA	SOUTH END	PALM	3720	145	26	3,770	\$0.95	\$3,582	MICROSURFACING
ELDERWOOD DR	ROLLING HILL	CENTER	ELDERW	5180	1,535	37	56,795	\$0.95	\$53,955	MICROSURFACING
JEANNE CIR	MORELLO	MORELLO	JEANNE	4420	1,985	34	67,490	\$0.95	\$64,116	MICROSURFACING
MARTINDALE DR	REDWOOD	320' W/O BENEDICT	MARTIN	5080	1,000	35	35,000	\$0.95	\$33,250	MICROSURFACING
RICHARDSON ST	ARREBA	ROBINSON	RICHAR	441	208	25	5,200	\$0.95	\$4,940	MICROSURFACING
Sub-Total:									\$381,995	
Annual Total:									\$3,989,349	
10% Contingency:									\$398,935	
6% Design Allowance:									\$239,361	
7.5% CM/Inspection Allowance:									\$299,201	
2020 Project Total:									\$4,926,846	